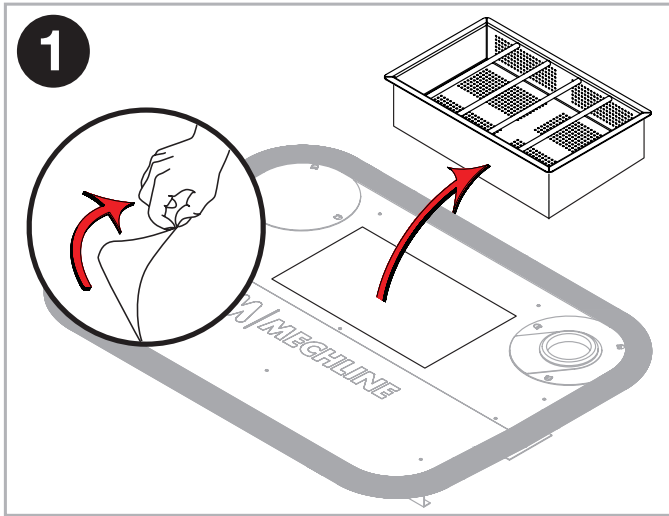


FOOD WASTE STRAINER

FWS600 - FITTING INSTRUCTIONS

manufactured by
MECHLINE

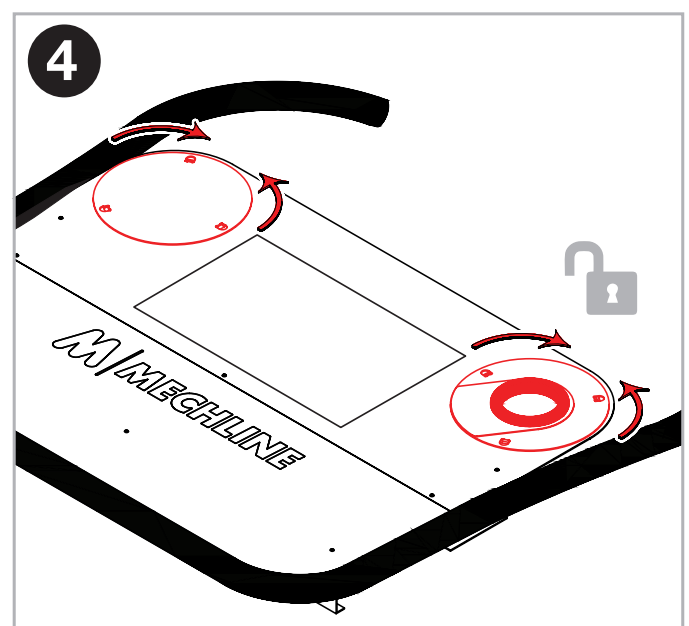
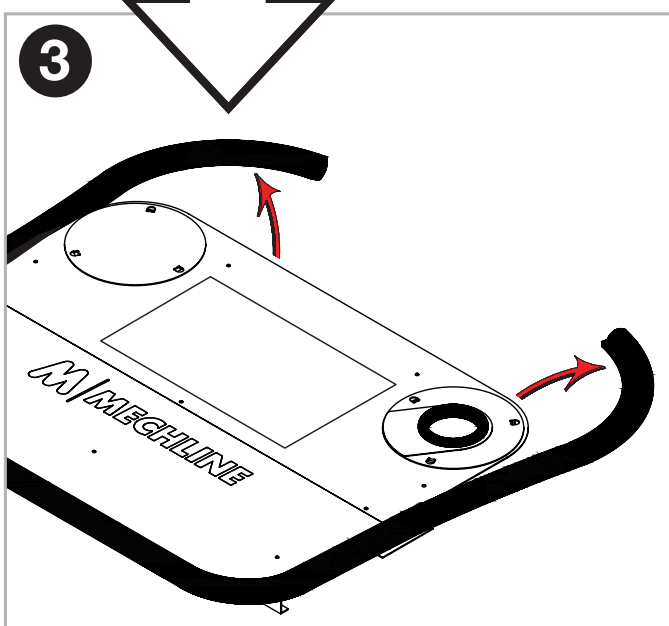
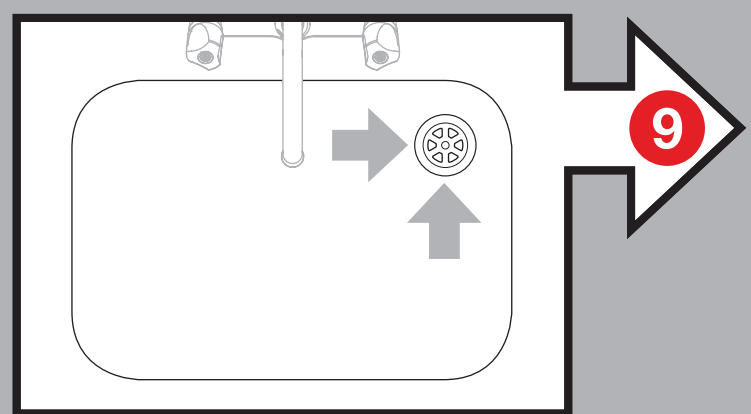
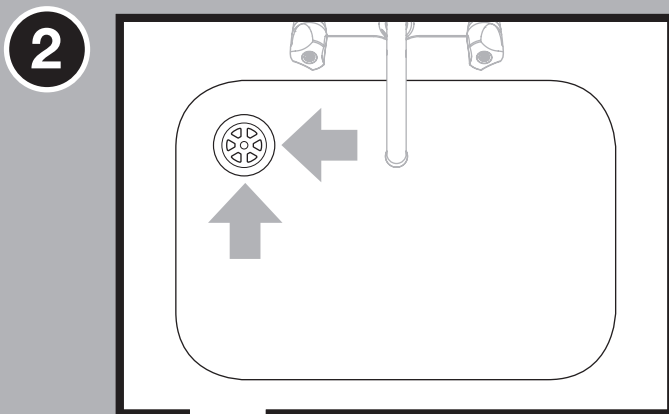


Thank you for purchasing the Mechline Food Waste Strainer FWS600.

- Durable 1mm 304 stainless steel with removable food waste basket.
- The fitting steps below should take no longer than five-minutes set-up for either left or right-handed sink bowl. The system uses unique, adjustable cover plates.
- Designed to fit sink bowl sizes between 580-610mm in length and 430-460mm in width.
- If purchased from Mechline, the (250mm or 300mm long) plug upstand strainer supplied will fit a standard 1 1/2 inch (40mm) waste.

IMPORTANT NOTES:

- **For the Mechline food waste strainer to work efficiently, a plug upstand strainer is required.**
- **The upstand must be lower than the sink's brim.**



continued...

